



Charming Stone Family Home In Rural Hamlet Near Saint James.,

€270,000

50240, Manche, Normandy

Ref: SG-1340

* 7 Beds * 3 Baths * 305m2

Charming detached stone family home within a short drive of the Mont Saint-Michel with BetB potential. Set in a quiet rural hamlet and several minutes' drive from Saint James. Good access to motorway network and links to the UK. Main house: Stone house under a slate roof, the ground floor offers spacious...

- Number of rooms: 10 Number of WCs: 6 Situation: Commerces Type of heating: Fuel

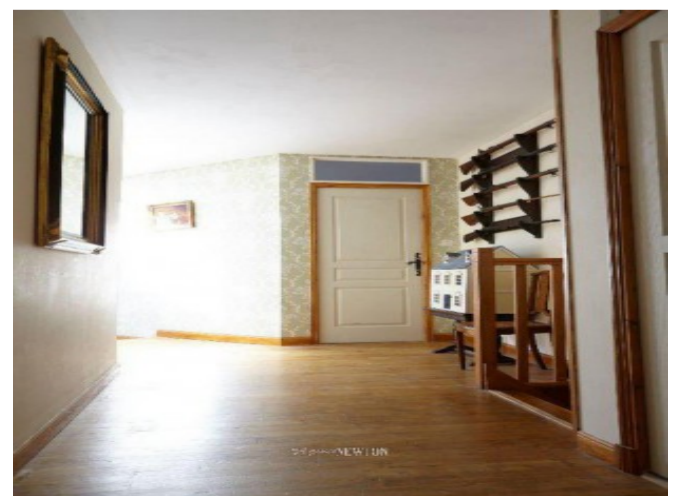
Telephone: +44 (0) 1225 463752 Email: info@francemedia.com

FranceMediaLtd, Cambridge House, Henry Street, Bath, BA11JS, United Kingdom

French Entrée 

Property Description

Charming detached stone family home within a short drive of the Mont Saint-Michel with BetB potential. Set in a quiet rural hamlet and several minutes' drive from Saint James. Good access to motorway network and links to the UK. Main house: Stone house under a slate roof, the ground floor offers spacious fitted kitchen, tiled floor and dining area. (65m²) Woodburner. Double glass doors to front and rear. Utility room. Large sitting room and entrance room (former kitchen). Sitting room. Office. Downstairs bedroom and adjoining bathroom with WC. Shower room and WC. Wooden staircase to 1st Floor: large landing. Family bathroom with corner bath and WC. Bedroom currently used as a Sewing Room. Two further bedrooms on this side of the house offer large walk in wardrobes and en suite shower rooms with WC. Original doorway into other end of the house offers a continuation of the landing and access to the main bedroom (30m²) with walk in wardrobe and en suite bathroom with WC. Small office. A second staircase from the landing leads to a bedroom in the eaves with en suite bathroom and WC. The remaining part of the attic is boarded out for storage. Much of the original character has been maintained, and the renovations have been achieved using similar materials. Exposed beams throughout. The property sits within a total of over an acre of land that offers a courtyard to the front, and gardens to side and rear. A small paddock is fenced off at one end. Above ground swimming pool has been terraced with wooden decking surround. Stone bread oven used as chicken coop. Large stone barn (approx.15m x 8m) with adjoining open fronted carport. The septic tank is new and services the whole house as a small treatment plant. dont 5.88 % honoraires TTC à la charge de l'acquéreur.



Telephone: +44 (0) 1225 463752 **Email:** info@francemedia.com

FranceMediaLtd, Cambridge House, Henry Street, Bath, BA11JS, United Kingdom

French Entrée 