



Spacious manor-style village house overlooking the Sorgue,

84800, Vaucluse, Provence-Alpes-Côte D'azur

€479,000

Ref: V2592

* 4 Beds * 2 Baths * 154m2

Located at the entrance of the Luberon valley, this early-19th century village property enjoys beautifully proportioned living spaces and lovely views, just several minutes' walk from the local shops and restaurants. The property was originally built in 1820 to serve as Fontaine-de-Vaucluse's post office. The property's innate character has been wonderfully preserved and complemented by a recent remodel, restoring this historic property to its former glory. The accommodation, comprises, on the ground floor: large sitting room with a pellet burning stove; master suite with an adjoining modern shower room; fully-equipped and recently installed kitchen; utility room with stairs leading down to a small cellar; guest WC. A particularly grand staircase leads to the first floor. The accommodation on this floor is composed of: three generously sized double bedrooms; bathroom; single bedroom; guest WC; mezzanine space that could be used as a home office. A south-east facing terrace provides

- Terrace Modern Kitchen

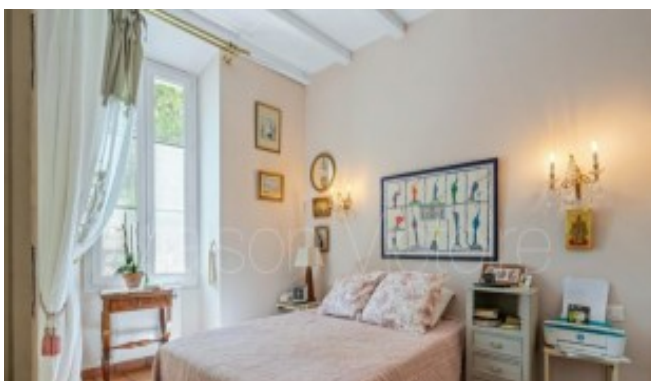
Telephone: +44 (0) 1225 463752 Email: info@francemedia.com

FranceMediaLtd, Cambridge House, Henry Street, Bath, BA11JS, United Kingdom

French Entrée 

Property Description

Located at the entrance of the Luberon valley, this early-19th century village property enjoys beautifully proportioned living spaces and lovely views, just several minutes' walk from the local shops and restaurants. The property was originally built in 1820 to serve as Fontaine-de-Vaucluse's post office. The property's innate character has been wonderfully preserved and complemented by a recent remodel, restoring this historic property to its former glory. The accommodation, comprises, on the ground floor: large sitting room with a pellet burning stove; master suite with an adjoining modern shower room; fully-equipped and recently installed kitchen; utility room with stairs leading down to a small cellar; guest WC. A particularly grand staircase leads to the first floor. The accommodation on this floor is composed of: three generously sized double bedrooms; bathroom; single bedroom; guest WC; mezzanine space that could be used as a home office. A south-east facing terrace provides a lovely outdoor dining and seating area, shaded by centenary Plane trees and overlooking the Sorgue river below. A charming outbuilding currently serves as storage for garden equipment/furniture. The property benefits from an additional cellar underneath the property, accessed from the garden. A large gate allows a car to be parked on the property. Amenities include: pellet-burning stove in the sitting room; an air-conditioning unit serving each floor; modern kitchen; fibre-optic internet; modern double-glazing. A thoroughly charming manor-style property, carefully updated for modern living, and conveniently located just several minutes' walk from Fontaine-de-Vaucluse's boulangerie, variety of restaurants and shops.



Telephone: +44 (0) 1225 463752 **Email:** info@francemedia.com

FranceMediaLtd, Cambridge House, Henry Street, Bath, BA11JS, United Kingdom

French Entrée 